

## Fluidmaster WC Frame NexaFlo SSF

Dry Wall Installation Element For Wall Hung WC Pan

### Product Data Sheet

**SKU code:** 2040F-0011-30

**EAN code:** 8681282661404

### Installation method

- Installation in prefabricated walls or studed walls,
- Pre-wall installation in dry walls,
- Universal installation into solid walls.



### Properties

- Self-supporting, double, green powder coated frame, square profile 40x40 mm,
- 400 kg load tested frame,
- Enables installation of wall hung WC pans with dimension of 180 mm or 230 mm,
- Pre-assembled wall brackets,
- Adjustable supporting feet (0-200 mm),
- Pre-assembled concealed cistern, with front electronic or mechanical actuation,
- Installed factory pre-set dual flush valve, large flush 4 L, small flush 2 L,
- Concealed cistern is fully insulated against condensation,
- Water supply connection possibility on the four positions,
- Maintenance service work is possible without using any tools.



### Special feature

- Quiet mechanical fill valve Fluidmaster 747 Series (Noise class 1 ISO 3822),
- Fill valve flow pressure 0,2 - 10 bar,
- Depth adjustable drain elbow (+/-20 mm),

### Product contains

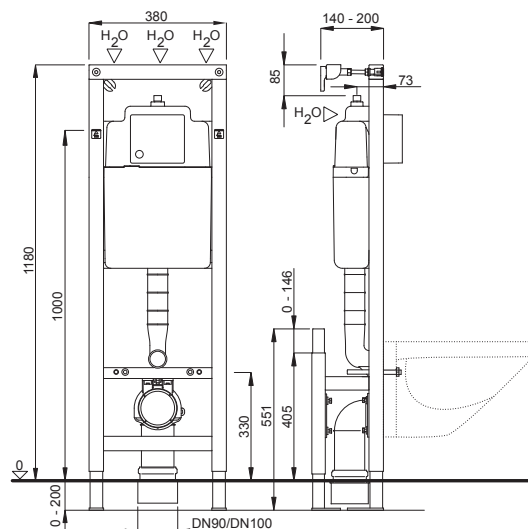
- Concealed cistern is equipped with pre-installed stop valve – top middle,
- Water supply connection G 1/2 with flexible hose,
- PE-HD drain elbow Ø 90 / 90 mm with seal,
- Eccentric PE-HD adapter Ø 90 / 110 mm with seal,
- Installation manual,
- Complete installation and fixing material.

### Dimension of the product

- Width 380 mm, height 1180 mm, depth 180 mm

### Information

- Quantity – packaging / pallet: 1 / 20 pcs
- Warranty: more information in General terms and conditions



Available flush plates, accessories has to be ordered separately

## FLUSH PLATES

### Balance IR TECH



White

GLASS  
WhiteGLASS  
BlackSTEEL DESIGN  
Stainless steel

### Harmony



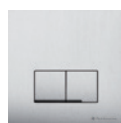
Matt chrome



Bright chrome



Black

STEEL DESIGN  
Stainless steelALU  
BlackALU  
White